

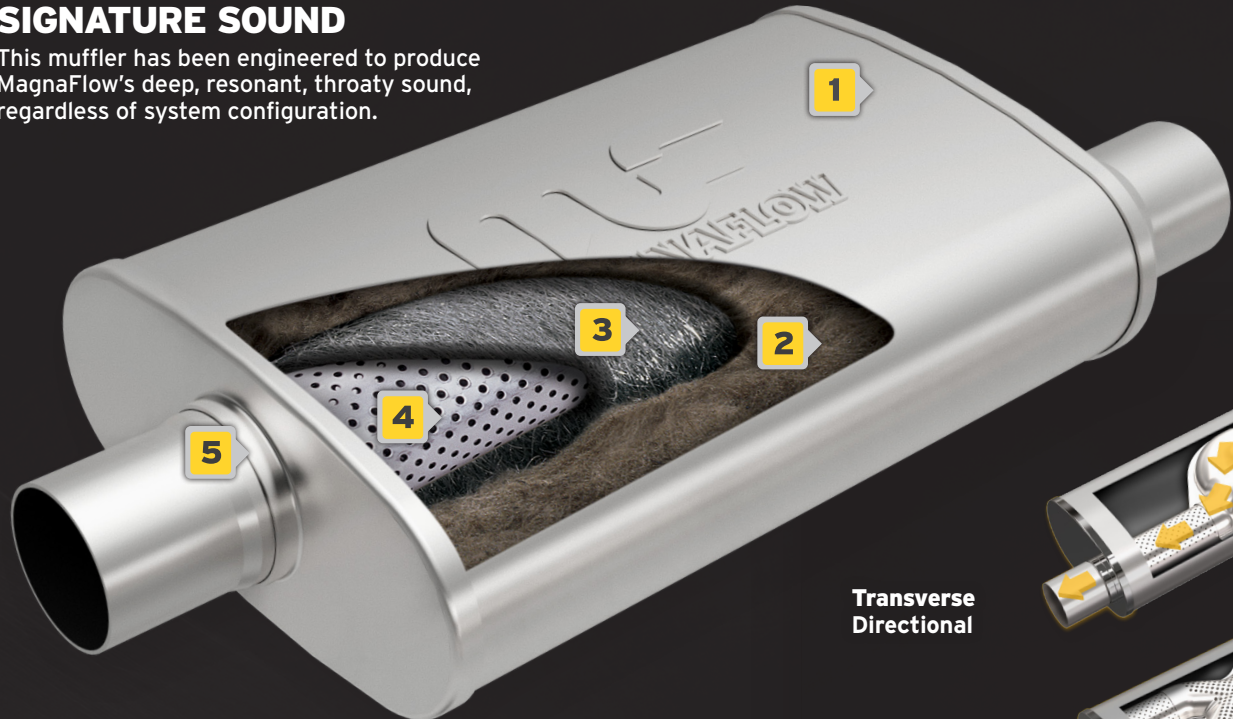


# PERFORMANCE STAINLESS STEEL MUFFLERS



## MAGNAFLOW'S DEEP SIGNATURE SOUND

This muffler has been engineered to produce MagnaFlow's deep, resonant, throaty sound, regardless of system configuration.



### 1 HEAVY GAUGE STAINLESS STEEL CONSTRUCTION

Corrosion resistant stainless steel is used throughout, including in the body, caps, and bushings, to ensure maximum service life and durability.

### 2 HIGH-TEMP ACOUSTIC PACKING MATERIAL

The high-temp acoustic packing material used in the muffler body is lower in density than the stainless-steel mesh it surrounds, which allows it to absorb mid-range and higher frequencies produced by the engine.

### 3 STAINLESS STEEL MESH

This absorbs the lowest frequencies of the exhaust and increases the exposure area of pressure waves that reach the high-temp acoustic packing material, further improving sound absorption.

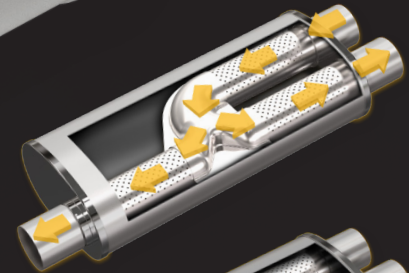
### 4 STRAIGHT-THROUGH STAINLESS STEEL PERFORATED CORE

A perforated steel core retains the same diameter as the inlet and outlet. This allows for gases to maintain velocity while evacuating the exhaust system, thereby reducing backpressure and improving performance.

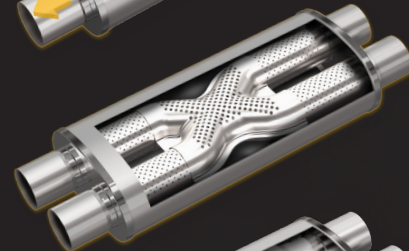
### 5 LAP-JOINTED & WELDED CONSTRUCTION

Lap-jointed and welded construction makes for a durable design in a piping diameter compatible with a wide range of popular vehicles.

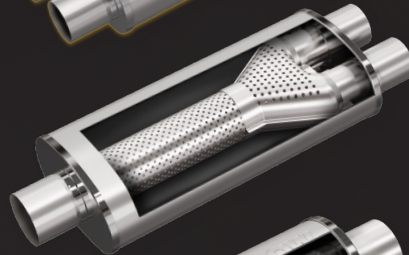
Transverse Directional



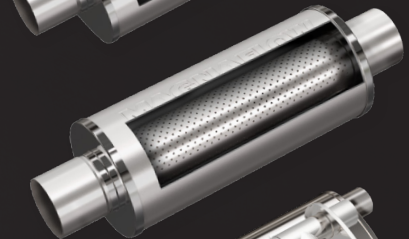
Dual/Dual with True X Bidirectional



Single/Dual with True Y Bidirectional



Center/Center Bidirectional



xMOD Modular Muffler



#### Superior Flow

Mandrel bent pipes for maximum flow



#### Optimized Performance

Optimized weight & dyno proven performance



#### Premium Construction

Stainless steel construction for maximum durability & finish



# PERFORMANCE EXHAUST SYSTEMS

## THE MAGNAFLOW ADVANTAGE

MagnaFlow's dedication to engineering and manufacturing the finest exhaust systems makes for a superior sound and driving experience. Constructed of premium materials and carefully designed for the best fitment and performance, you can have confidence in making the right choice for your vehicle.

## CHOOSE YOUR SOUND



EXTREME



AGGRESSIVE



MODERATE



MILD

## TIPS AVAILABLE IN:



SATIN & POLISHED

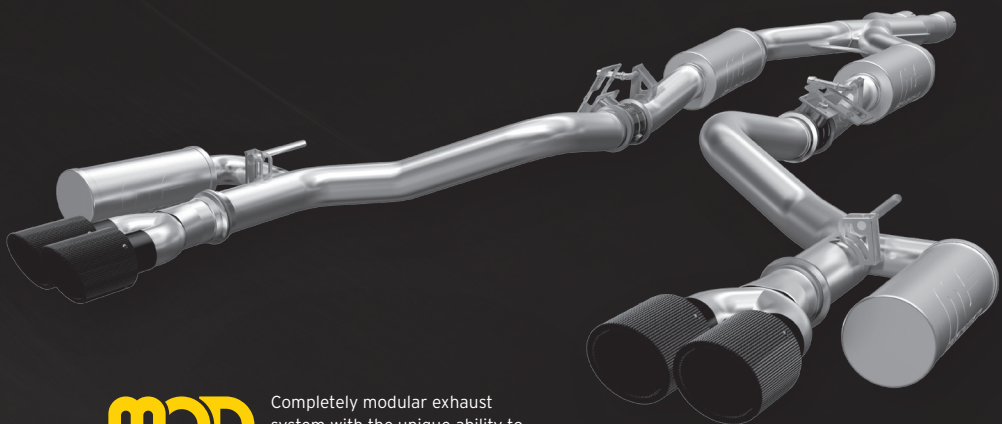


CARBON FIBER



BLACK

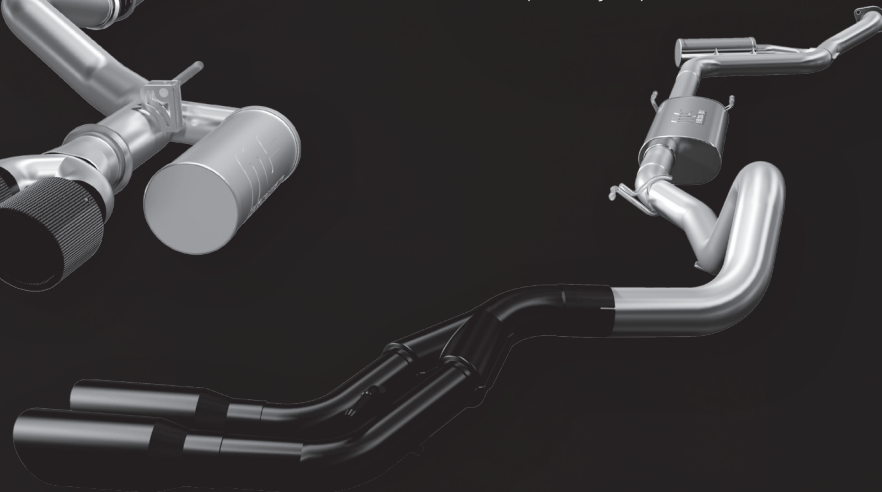
AMERICAN MUSCLE | SPORT COMPACT | EUROPEAN | TRUCK | SPORT UTILITY | JEEP



Completely modular exhaust system with the unique ability to personalize and fine tune the power and sound of your exhaust.



Achieve the ultimate balance of sound and performance. Our SPEQ Series delivers the perfect combination of tone and efficiency allowing for an optimal driving experience while still producing the punch to be noticed.



## Series Descriptions

### xMOD

Modular exhaust system with the unique ability to personalize and fine tune your exhaust for the power and sound you want.

### SPEQ / NEO

Engineered to produce a modern, aggressive sound utilizing our latest technological innovations and decades of exhaust design experience.

### Overland

Explore further with a high clearance design that is specifically tuned for overlanding to ensure comfort on long drives on trails.

### Competition/Sport

Maximum performance, reduced mass and an aggressive exhaust sound

### Street/Touring

Stainless performance exhaust system. Comfortable interior sound and performance exterior sound.

### PRO DPF

Stainless steel construction with MF Venturi Intercooled tip(s). No hassle emissions legal design.

### Black DPF

Our premier MagnaFlow Performance DPF Series featuring stainless construction with the added style of a Black Coating applied from tailpipe to tip.

### D-Fit Replacement kit

Replace the restrictive factory muffler, while maintaining the OEM piping and tailpipe. Available with and without mufflers.



### Superior Flow

Mandrel bent pipes for maximum flow



### Optimized Performance

Optimized weight & dyno proven performance



### Premium Construction

Stainless steel construction for maximum durability & finish

