

# TIPS AND TRICKS

## FTE Braking Nomenclatures

Part numbers

All FTE Braking Range

### FTE Nomenclatures



#### MASTER BRAKE CYLINDER

H 209042.0.6

**H** **20** 9042.0.6

Product = Master Brake Cylinder

Diameter (mm)

MH 209042.0.6

**M** **H** **20** 9042.0.6

M= MINERAL OIL

Product = Master Brake Cylinder

Diameter (mm)



#### BRAKE BOOSTER

U 1001001

**U** **10** 01001

Product = Brake Booster

Diameter (inch)



### WHEEL CYLINDERS



R 280308A1

**R** 280308A1

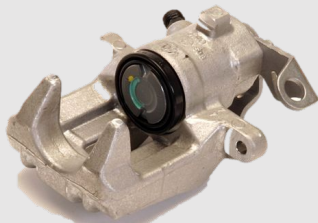
Product = Wheel Cylinder

MR 280308A1

**M** **R** 280308A1

M= MINERAL OIL

Product = Wheel Cylinder



### BRAKE CALIPER

RS 549020A0

**RS** **54** 549020A0

Product = brake Caliper **NEW PART**

Piston Diameter (mm)

RX 549020A0

**RX** **54** 549020A0

Product = brake Caliper **REMAN PART**

Piston Diameter (mm)

RS 549020

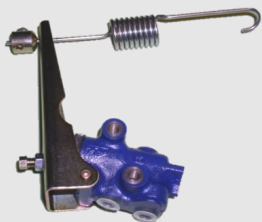
**A0**

WITHOUT Brake Pad

RX 549020

**A1**

WITH Brake Pad



### BRAKE FORCE REGULATOR

BKR 1084

**BKR** 1084

Product = Brake force regulator



Website  
[valeoservice.us/en-us](http://valeoservice.us/en-us)

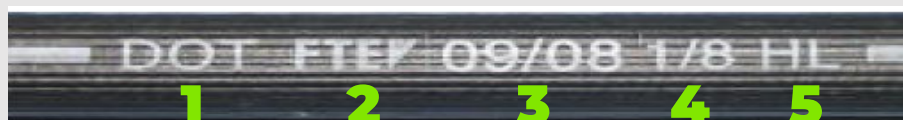


Technical Assistance  
1-888-718-2536

[valeoservice.us](http://valeoservice.us)

Brake hydraulic		Clutch hydraulic		Dry brake / cables	
<b>H</b>	Master brake cylinder	<b>KG</b>	Clutch master cylinder	<b>BL</b>	Brake pads
<b>MH</b>	Mineral oil consisting master brake cylinder	<b>MKG</b>	Mineral oil consisting clutch master cylinder	<b>BZ...W/S</b>	W = Warning contact / S = Wheel speed sensor (ABS)
<b>R</b>	Wheel cylinder	<b>KN</b>	Clutch slave cylinder	<b>BS</b>	Brake disc
<b>MR</b>	Mineral oil consisting wheel cylinder	<b>MKN</b>	Mineral oil consisting clutch slave cylinder	<b>BT</b>	Drum brake
<b>RS</b>	New part brake caliper	<b>ZA</b>	Concentric slave cylinder	<b>BB</b>	Brake shoe
<b>RX</b>	Old part brake caliper	<b>MZA</b>	Mineral oil consisting concentric slave cylinder	<b>TK</b>	Drum brake kit (Master kit)
<b>RK</b>	Repair set	<b>A</b>	Clutch line	<b>FBS</b>	Brake cable
<b>RKS</b>	Repair set brake calipers	<b>KV</b>	Clutch booster	<b>FKS</b>	Clutch cable
<b>BKR</b>	Brake force regulator				
<b>BKV</b>	Brake booster				

## HOSES



<b>1</b>	Manufactured to meet the requirements of the Department of Transportation (DOT) in the United States
<b>2</b>	Manufacturer brand/logo
<b>3</b>	Date of production
<b>4</b>	Nominal inside diameter of the hose, which is 1/8 inch or approximately 3.2 mm
<b>5</b>	HL stands for "Low Expansion Hose" which means that the hose is designed to have a low volumetric expansion under pressure.



Website  
[valeoservice.us/en-us](http://valeoservice.us/en-us)



Technical Assistance  
 1-888-718-2536

[valeoservice.us](http://valeoservice.us)