

TIPS AND TRICKS

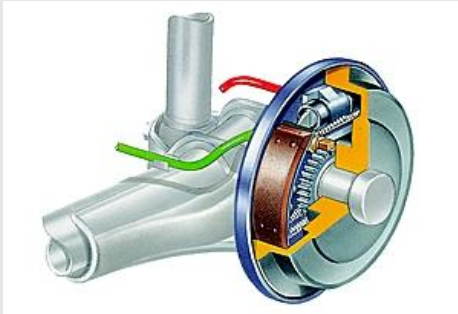
FTE Brake hoses

Application for

All brake hose models

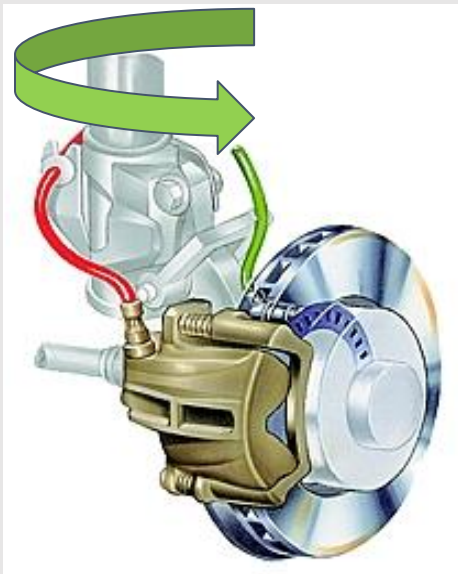


Brake hose definition



Brake hose is a **flexible** hose part in the braking system, that carries the **braking pressure** from the brake master cylinder to the brake wheel cylinder.

Brake hose characteristics



- Carries high brake pressure fluid to wheel cylinder which is subjected to
 - **High dynamic loads**
 - **Extreme conditions**
- Links the chassis to the moving parts due to the following reasons
 - **Flexible brake hose**
 - **Reinforced flexible rubber hose**
 - **Subjected to twisting & wear climate constraints**



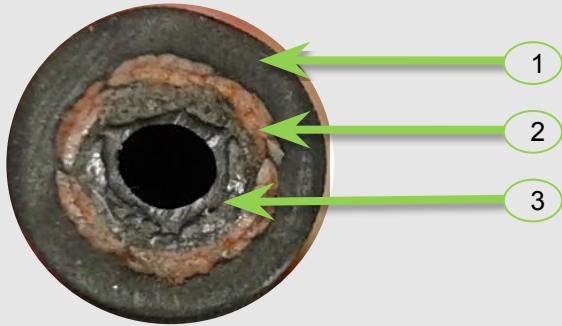
Website
valeoservice.us/en-us



Technical Assistance
1-888-718-2536

valeoservice.us 

Brake hose Construction



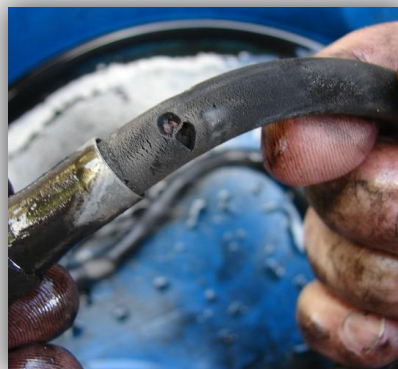
Nb	Part
1	Outer rubber (protection against external environment)
2	Synthetic fiber braid (carries pressure)
3	Inner rubber

Brake hose wear sources

Internal wear: mechanical stresses	External wear: environment
Hose flexibility	Climatic Condition
Hydraulic pressure	Cleaning agents
Temperatures <-50°C & >100°C	Rocks, sand & salt

Brake hose signs of wear

If there are any cracks or leakage appearing on the brake hose, **immediately** replace it as the **braking will be inefficient**.



Website
valeoservice.us/en-us



Technical Assistance
 1-888-718-2536

valeoservice.us

Brake hose: Homologation

Brake hoses must be compliant with following international standards

S	Code Name	Description
1	SAE-J1402 (international homologation)	<ul style="list-style-type: none"> ● Specifies air brake requirements for reinforced elastomeric hose ● Specifies suitable fitting in automotive air brake system <ul style="list-style-type: none"> ○ Frame to axle ○ Tractor to trailer ○ Trailer to trailer ○ Unshielded air lines with air pressure to 1 MPa that are exposed to potential pull or push ● Does not operate under external or internal temperature condition under -40c or above 100c
2	FMVSS 106 (US department of transportation)	<ul style="list-style-type: none"> ● Specifies labeling & performance for motor vehicle <ul style="list-style-type: none"> ○ Brake hose ○ Brake hose assemblies ○ Brake hose end fitting
3	ISO 3996: 1995	<ul style="list-style-type: none"> ● Specifies testing procedures for hydraulic brake hose assemblies ● On hose diameter 3.2 mm or 4.8 mm ● Applied assemblies made of a hose fabricated from cord & synthetic elastomers ● For non-petroleum-base brake fluids the assemblies made of a hose fabricated from cord and synthetic elastomers and assembled with metal end fittings
4	ISO 6120:1995	<ul style="list-style-type: none"> ● Same as ISO 6120:1995 “with petroleum-base brake fluids in accordance with ISO 7308”

